



# Routemaster

Moquette Specification

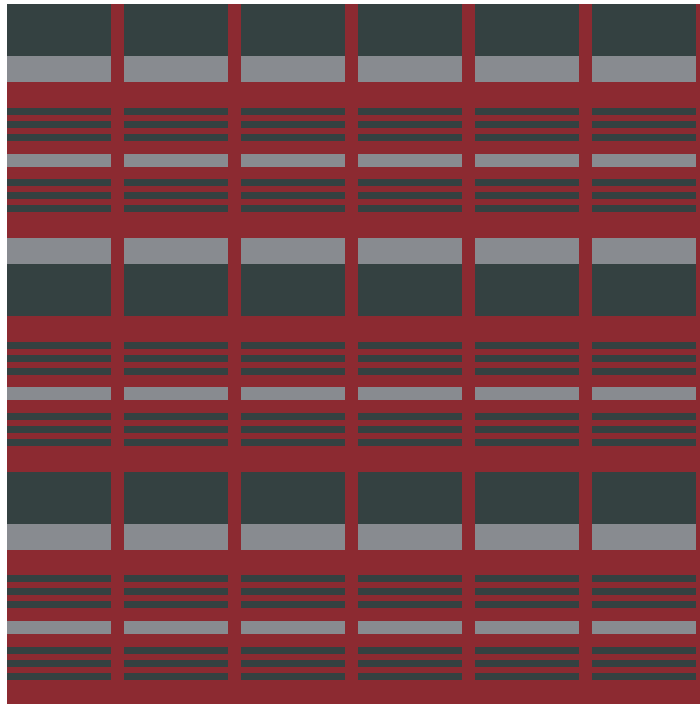
# Moquette References

---



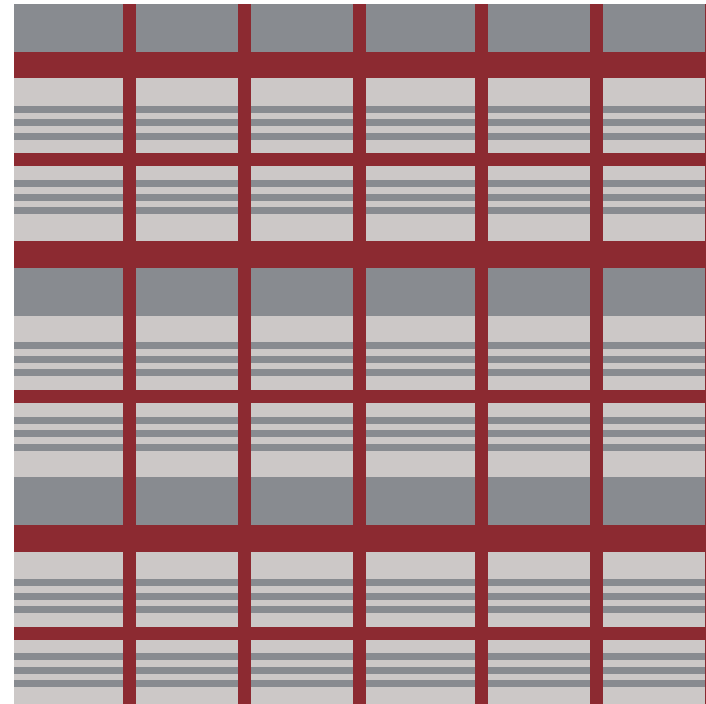
Standard

**Ref. EKFE88**



Priority

**Ref. EKGE89**



The Priority Moquette has been designed to compliment the interior design whilst highlighting the purpose of priority seats. The Priority Moquette design is a working concept and may be subject to change.

Please notice that all colours in this document are NOT representative of the actual tuft

# Priority Badge Message

---

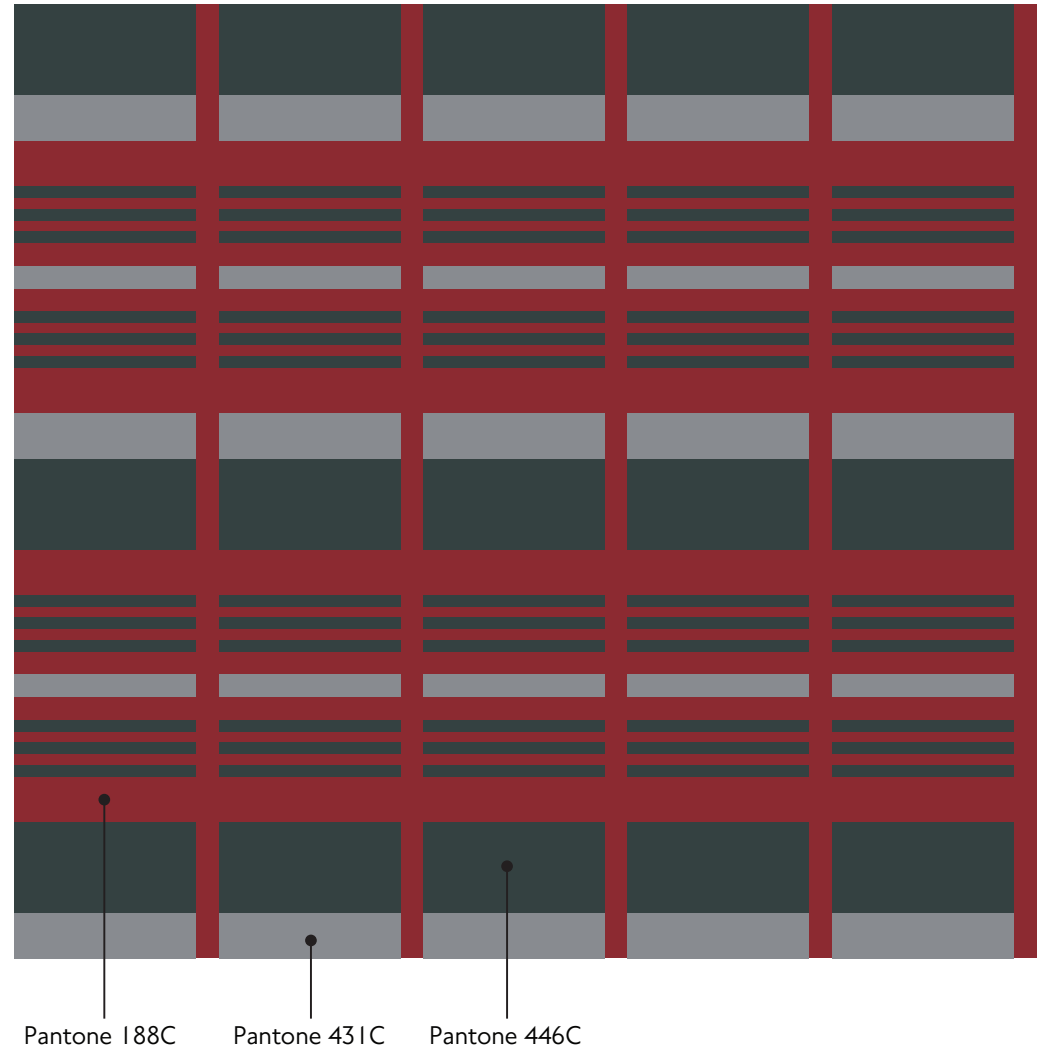
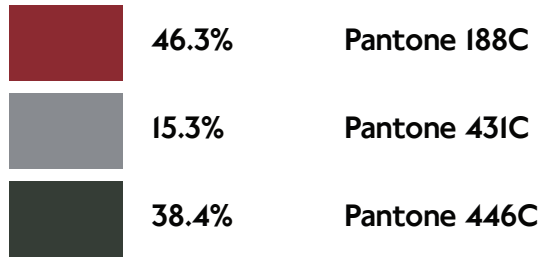


Approved option for message that should be applied to the priority seats.

# Moquette Colour and Pattern Specification



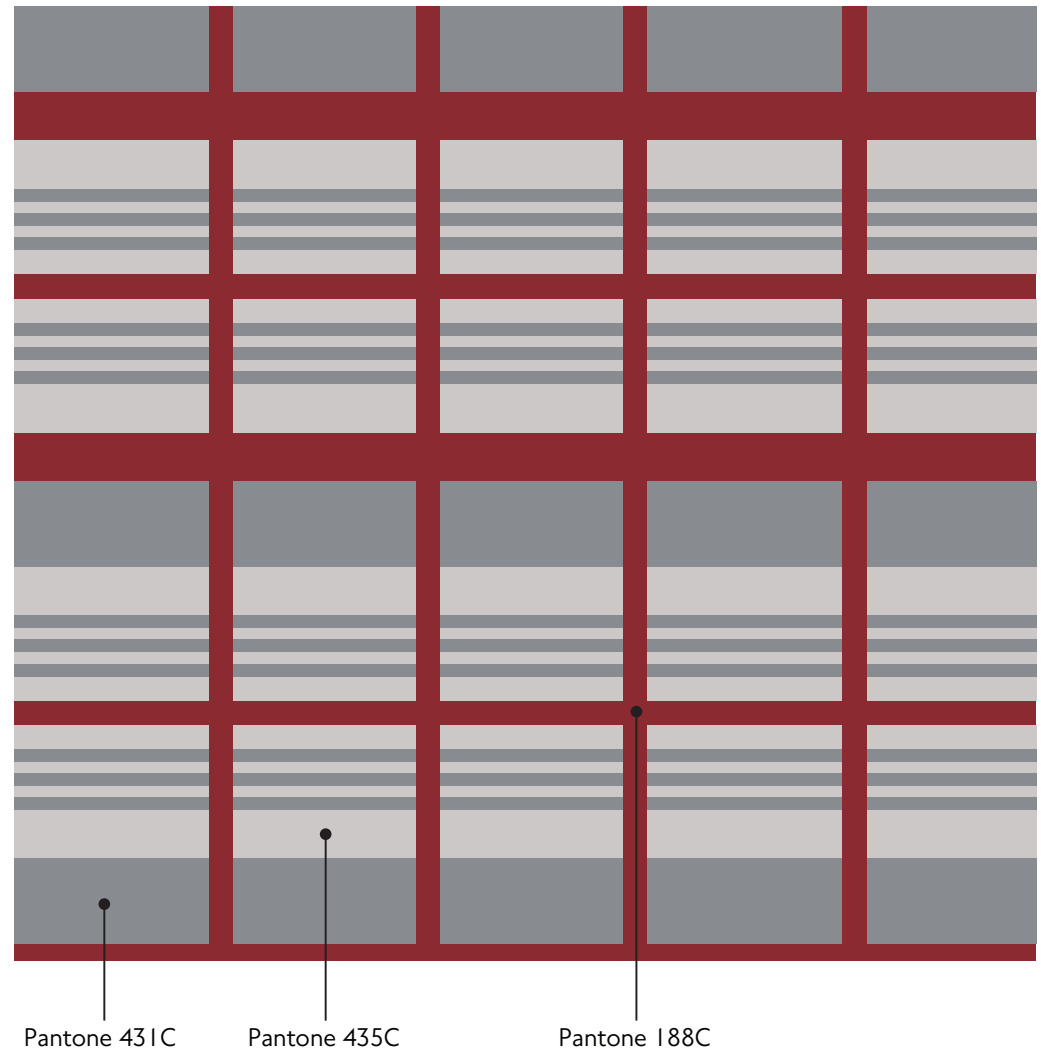
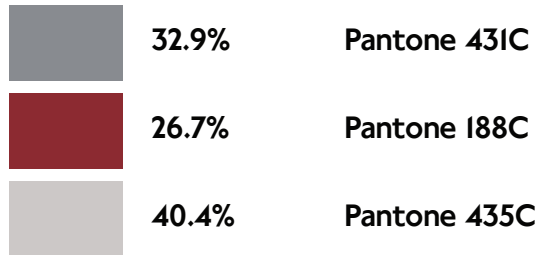
## Standard Moquette



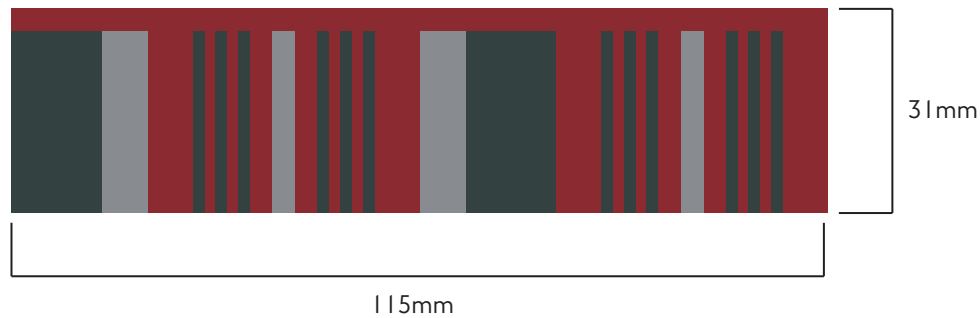
# Moquette Colour and Pattern Specification



## Priority Moquette



# Moquette Tile Size and Orientation



Seat fabric direction during weaving



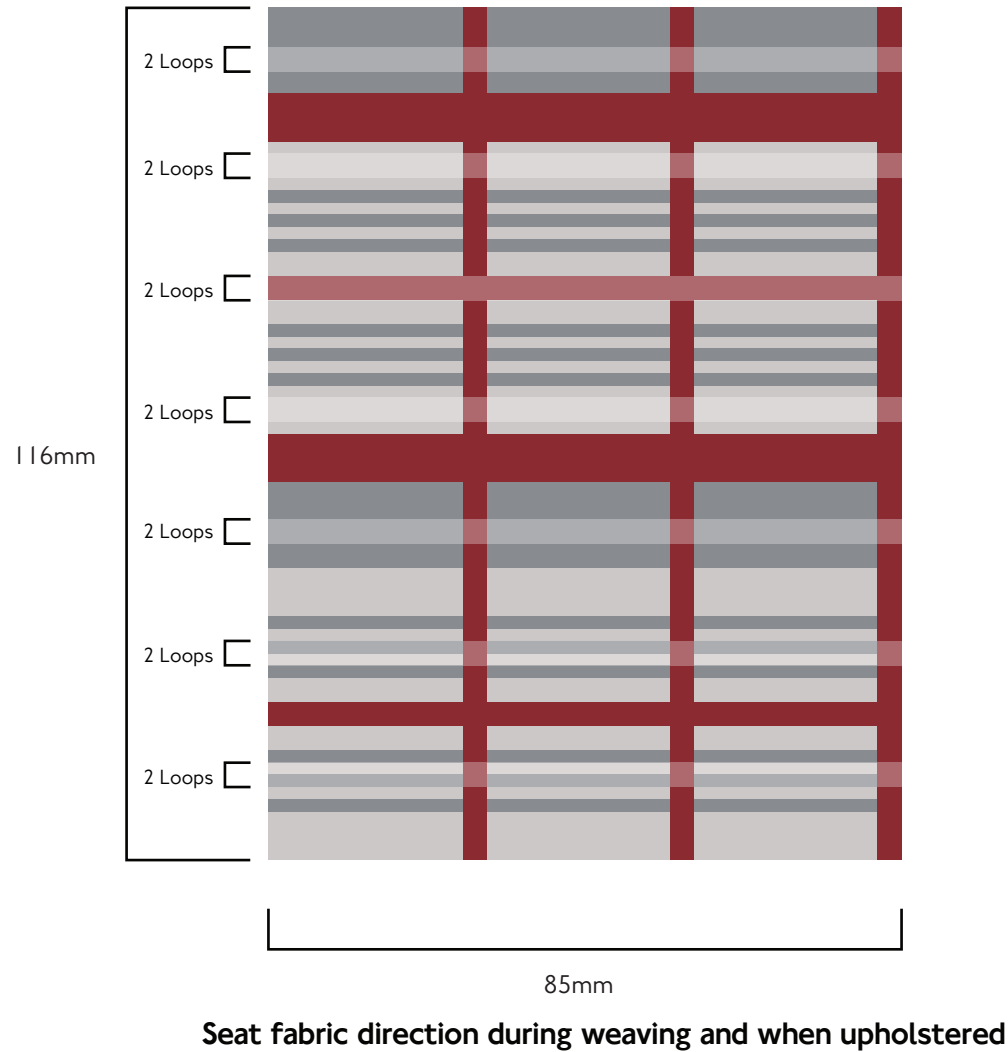
Seat fabric direction when upholstered

Overall tile repeat size 115 x 31mm.

This visual shows the Standard Moquette only.

The tile size may need to be adjusted to suit individual loom specifications. The supplier's final proposal should be approved by TfL before manufacture.

# Moquette Tile Size and Orientation



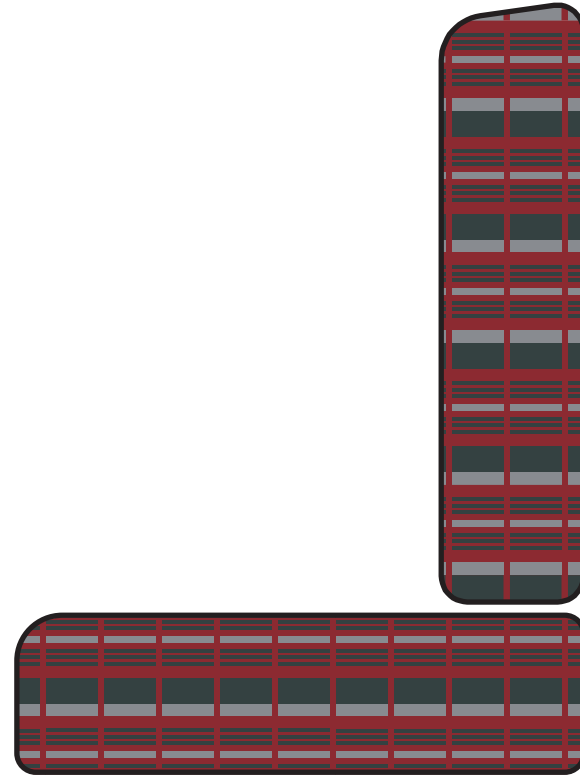
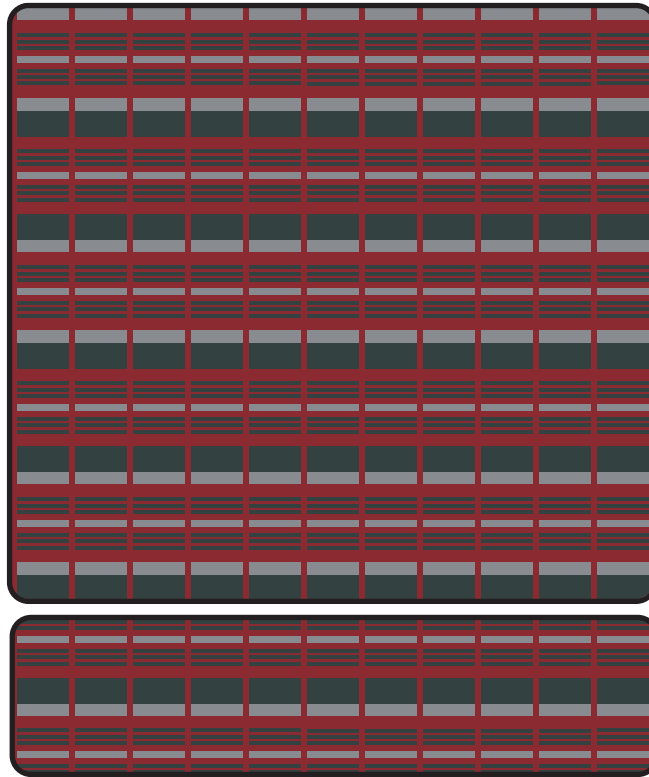
Overall tile repeat size 85 x 116mm.

This visual shows the Priority Moquette only.

The tile size may need to be adjusted to suit individual loom specifications. The supplier's final proposal should be approved by TfL before manufacture.

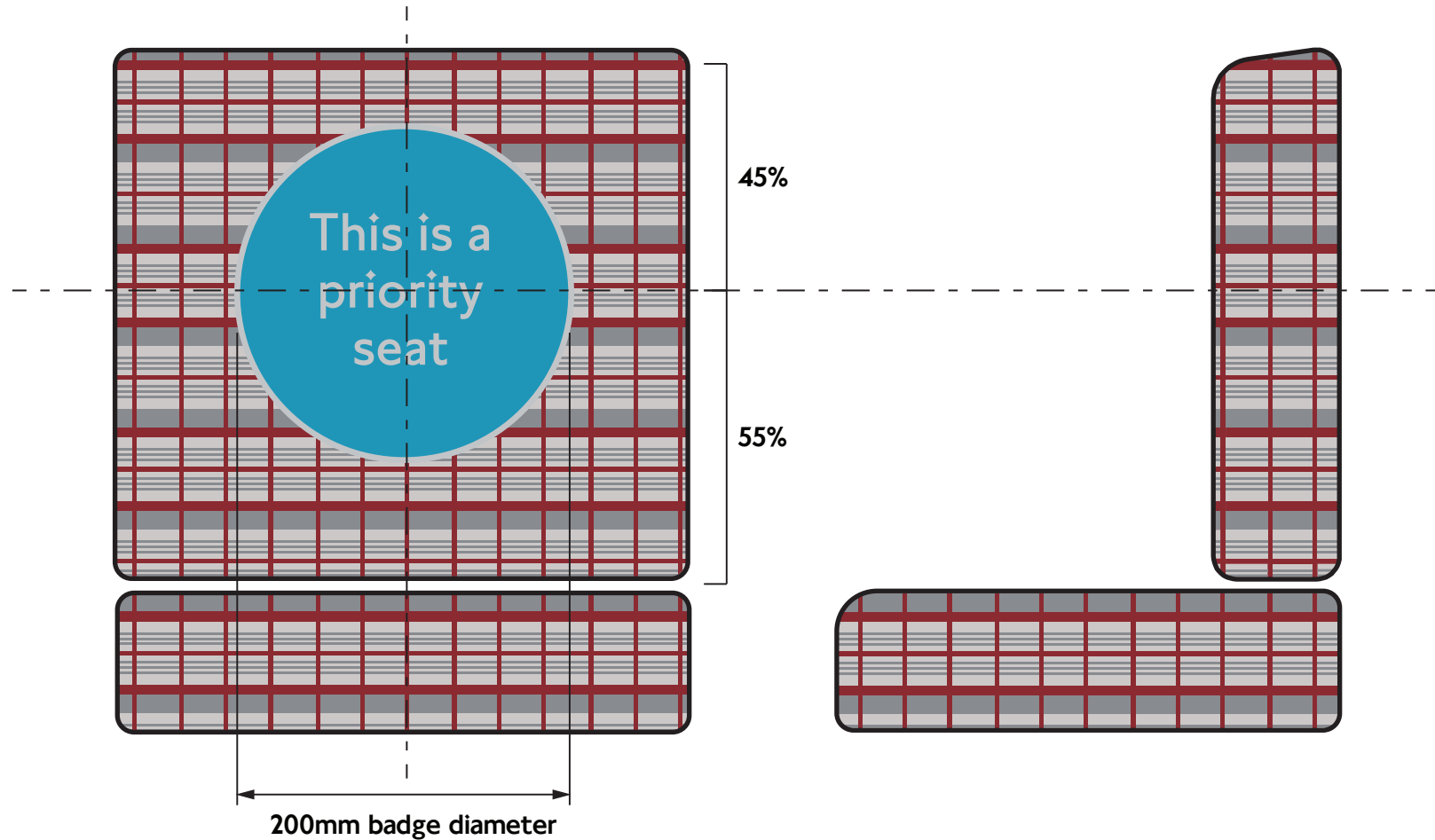
# Standard Seat Upholstery

---





# Priority Badge Size and Position



Priority Badge is positioned above the horizontal centreline on the seat.